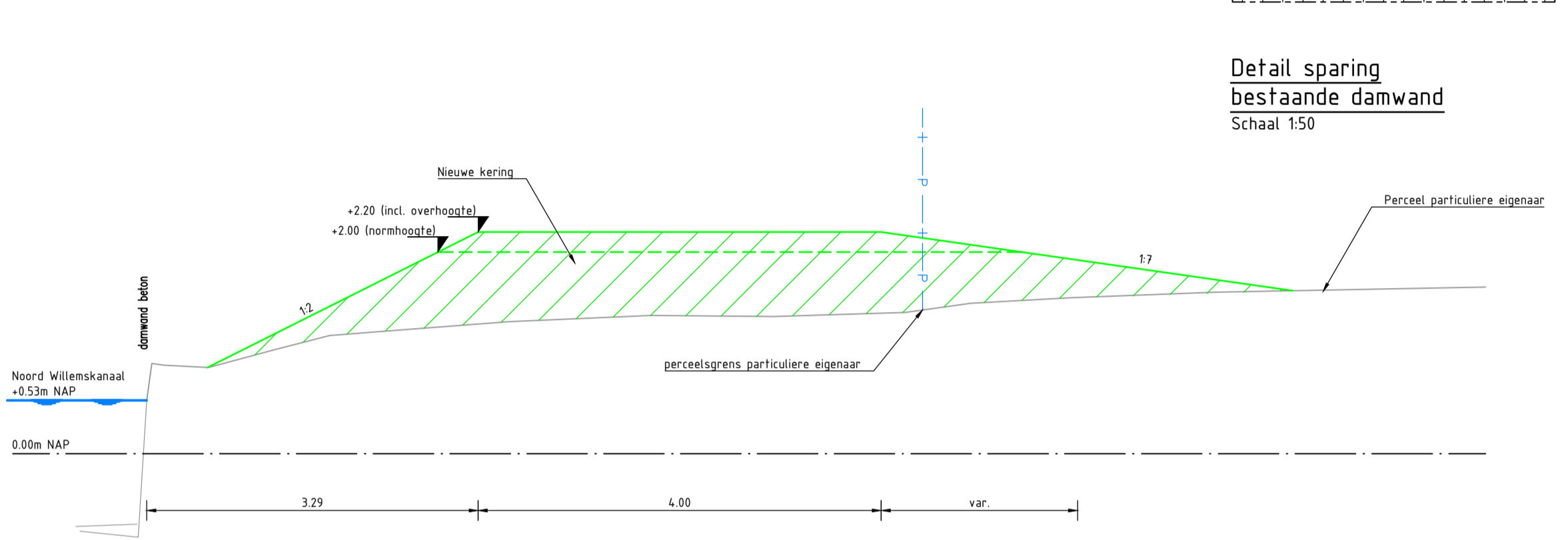
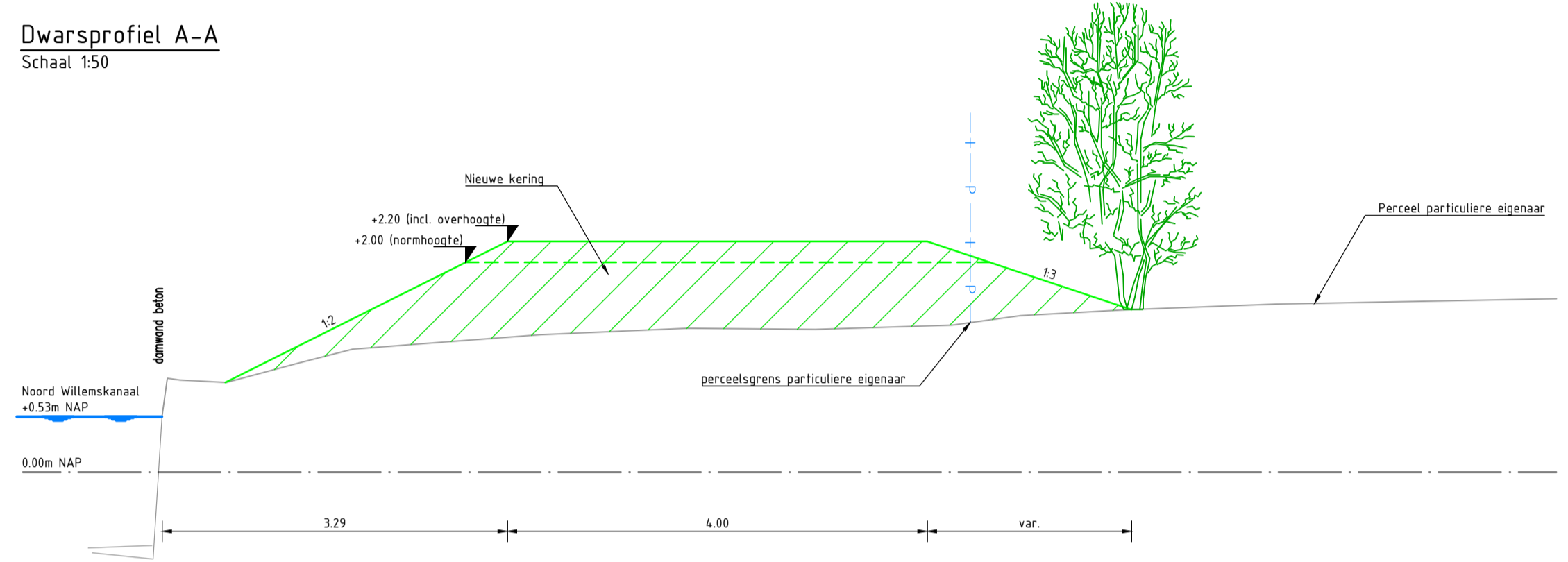


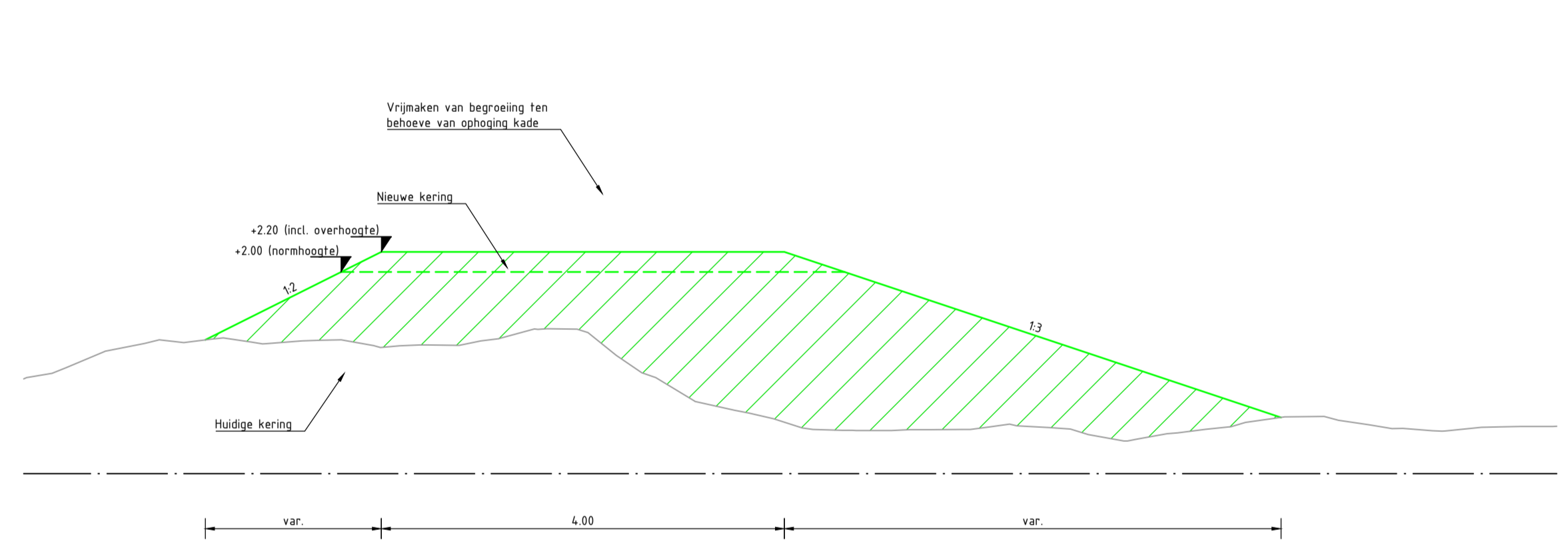
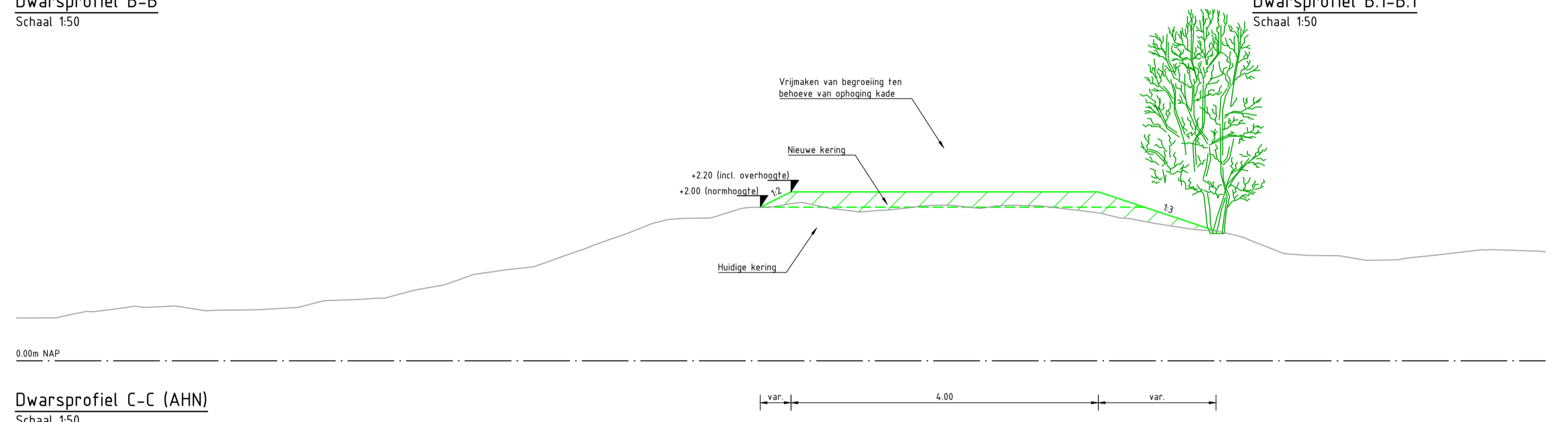
Dwarsprofiel A-A  
Schaal 1:50

Detail spring  
bestaande damwand  
Schaal 1:50



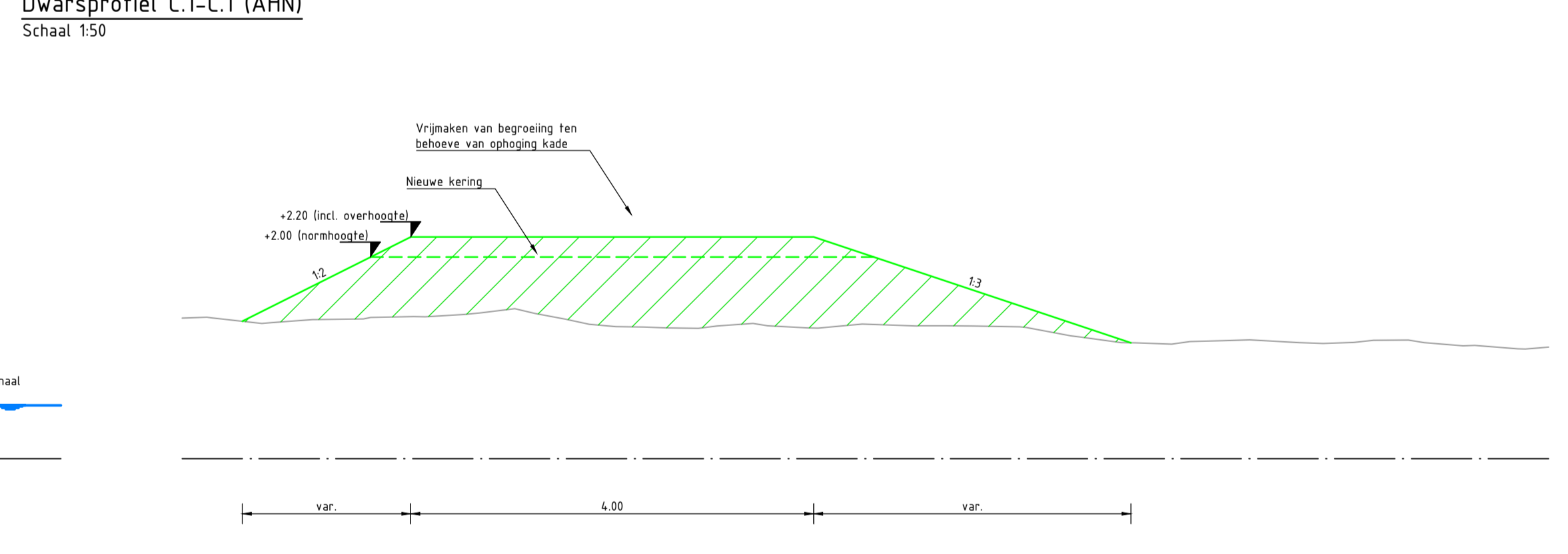
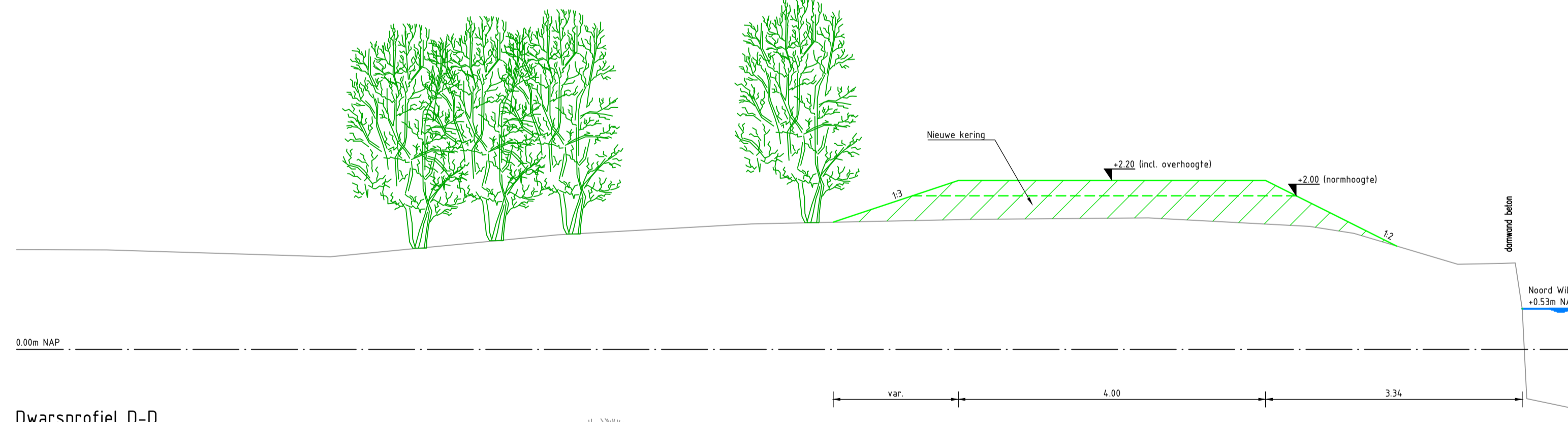
Dwarsprofiel B-B  
Schaal 1:50

Dwarsprofiel B.1-B.1  
Schaal 1:50



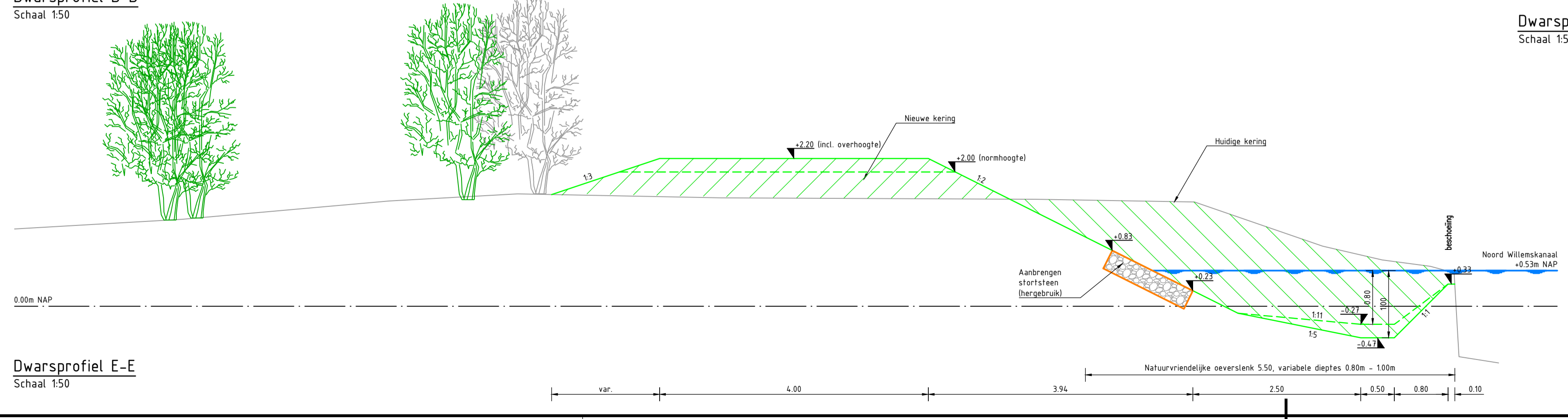
Dwarsprofiel C-C (AHN)  
Schaal 1:50

Dwarsprofiel C.1-C.1 (AHN)  
Schaal 1:50

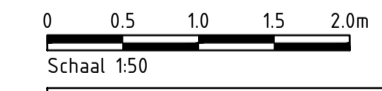


Dwarsprofiel D-D  
Schaal 1:50

Dwarsprofiel C.2-C.2 (AHN)  
Schaal 1:50



Dwarsprofiel E-E  
Schaal 1:50



Maten in meters en materiaalmaten in millimeters, tenzij anders vermeld.  
Peilmaten in meters t.o.v. N.A.P.

**MUG**  
INGENIEURSBUREAU

0 001 Jnl. Eerste uitgave  
Wjz. Gft. Gec. Omschrijving

26-01-2022  
Datum

Project: Planvorming kaden en oevers Noord Willemskanaal  
Wittemolen-De Punt

Tekeningnummer: 003  
Schaal: 1:50  
Formaat: A1  
Blad: 03 van 04

Oprachtgever: Waterschap Hunze en Aa's

CONCEPT

Onderdeel: Definitief ontwerp  
dwarsprofielen traject 1 t/m 4

Zierikzee 8  
9353 VA LEEK  
Postbus 338  
9350 AC LEEK  
054 55 24 20  
info@mug.nl  
www.mug.nl

PRAKTISCHE DENKERS